

related literature |

LAN-133-EN Closet Connector Housing Panels (CCH-CP)

- Visit www.corning.com/opcomm/safety for full safety precautions

Precautions



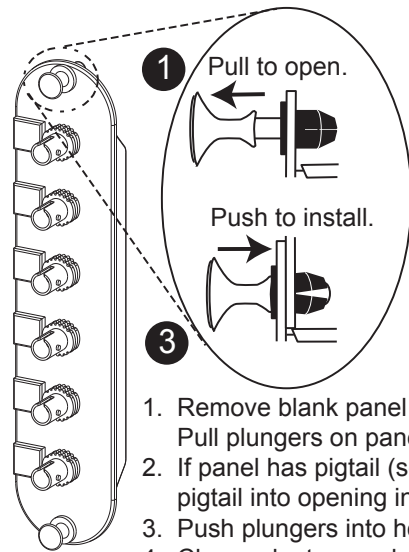
WARNING: Never look directly into the end of a fiber that may be carrying laser light.

Laser light can be invisible and can damage your eyes. Viewing it directly does not cause pain. The iris of the eye will not close involuntarily as when viewing a bright light. Consequently, serious damage to the retina of the eye is possible. Should accidental eye exposure to laser light be suspected, arrange for an eye examination immediately.

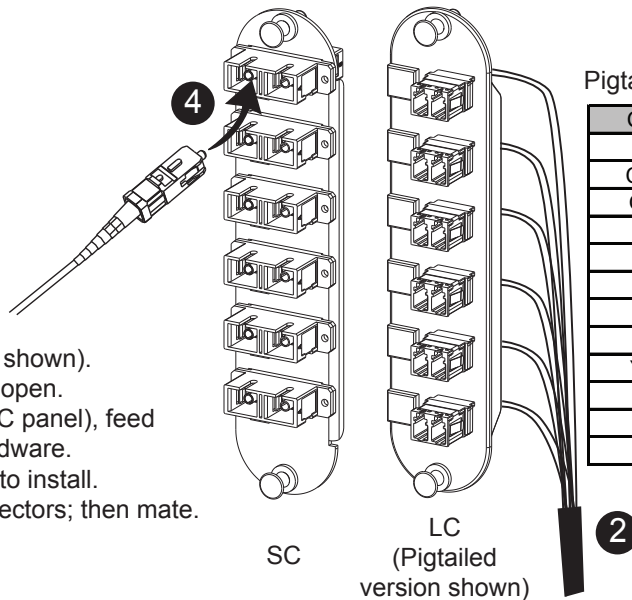


WARNING: DO NOT use magnifiers in the presence of laser radiation. Diffused laser light can cause eye damage if focused with optical instruments. Should accidental eye exposure to laser light be suspected, arrange for an eye examination immediately.

Installation



ST® Compatible



Color Code for Pigtailed Connector Panels

COLOR	FIBER
Blue	1
Orange	2
Green	3
Brown	4
Slate	5
White	6
Red	7
Black	8
Yellow	9
Violet	10
Rose	11
Aqua	12

TPA-2893

Corning Optical Communications LLC • PO Box 489 • Hickory, NC 28603-0489 USA
800-743-2675 • FAX 828-325-5060 • International +1-828-901-5000 • www.corning.com/opcomm

Corning Optical Communications reserves the right to improve, enhance, and modify the features and specifications of Corning Optical Communications products without prior notification. A complete listing of the trademarks of Corning Optical Communications is available at www.corning.com/opcomm/ trademarks. All other trademarks are the properties of their respective owners. Corning Optical Communications is ISO 9001 certified. © 2010, 2014 Corning Optical Communications. All rights reserved. Published in Mexico.